

Weston

# WATERSHED DRAINAGE BASINS



Newton

Natick

## TOWN OF WELLESLEY, MASSACHUSETTS



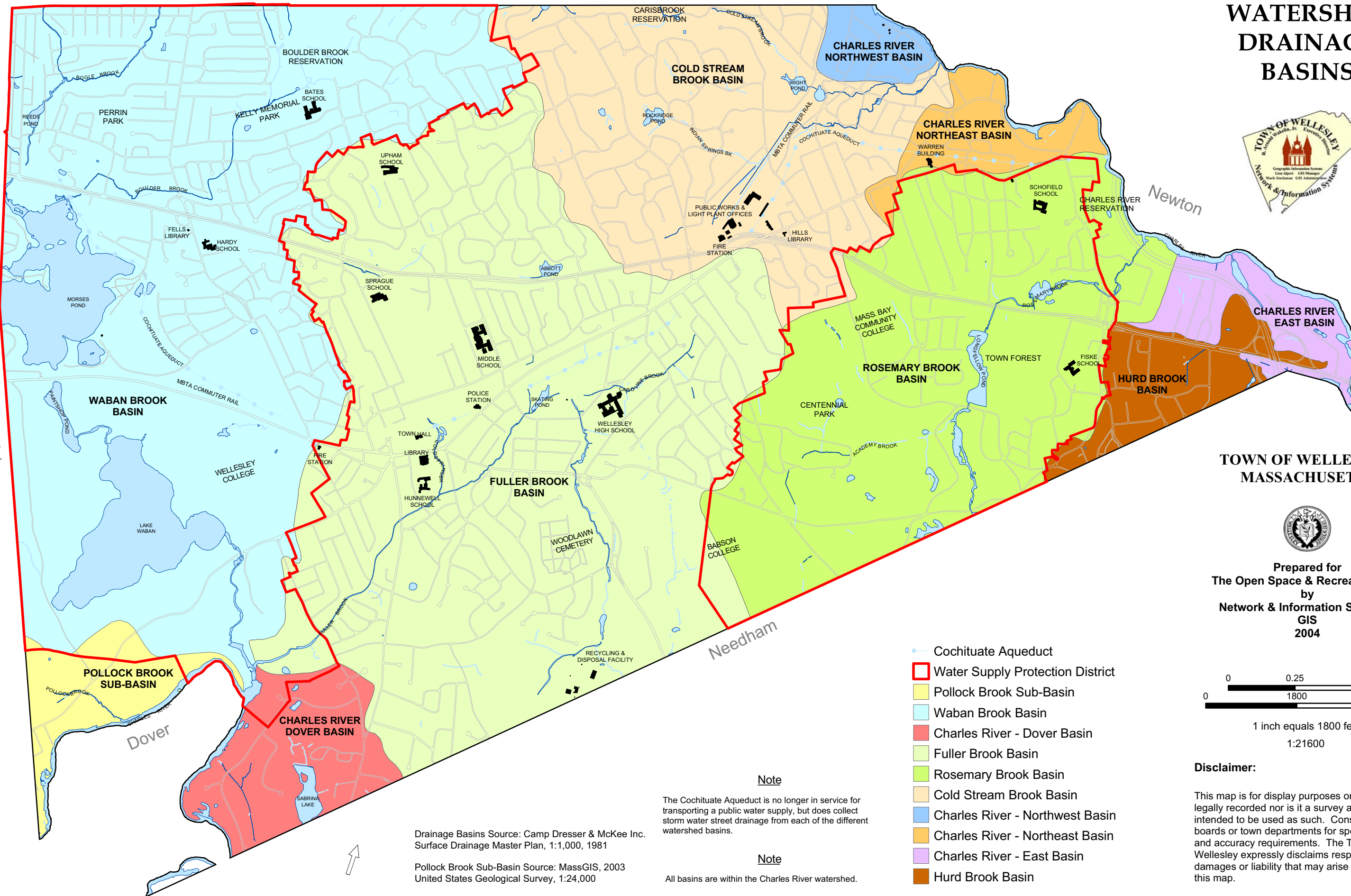
Prepared for  
The Open Space & Recreation Plan  
by  
Network & Information Systems  
GIS  
2004



1 inch equals 1800 feet  
1:21600

### Disclaimer:

This map is for display purposes only. It is neither legally recorded nor is it a survey and it is not intended to be used as such. Consult appropriate boards or town departments for specific questions and accuracy requirements. The Town of Wellesley expressly disclaims responsibility for damages or liability that may arise from the use of this map.



### Note

The Cochituate Aqueduct is no longer in service for transporting a public water supply, but does collect storm water street drainage from each of the different watershed basins.

### Note

All basins are within the Charles River watershed.

Drainage Basins Source: Camp Dresser & McKee Inc.  
Surface Drainage Master Plan, 1:1,000, 1981

Pollock Brook Sub-Basin Source: MassGIS, 2003  
United States Geological Survey, 1:24,000